

SPECIFICATIONS

GENERAL		
Frequency Coverage	A Band / B Band	108.000 ~ 500.000 MHz
	BC BAND	88.000 ~ 108.000 MHz
Mode	AM, FM, WFM (F3E, A3E)	
Antenna impedance	50 Ω (SMA)	
Receiving system	Double conversion superheterodyne	
Intermediate frequency	A Band	58.050 MHz/450 kHz (1st IF/2nd IF)
	B Band	57.150 MHz/450 kHz (1st IF/2nd IF)
Number of memory channels	2000 regular memory channels, 200 auto memory channels, 25 scan edges, 100 skip channels	
Sensitivity	AM (10 dB S/N : 1 kHz Dev/30 % Mod)	108.000 ~ 142.000 MHz: Less than 0 dBμ 222.000 ~ 249.995 MHz: Less than 0 dBμ 250.000 ~ 299.995 MHz: Less than 5 dBμ 300.000 ~ 400.000 MHz: Less than 3 dBμ
	FM (12 dB SINAD : 1 kHz/3.5 kHz Dev)	108.000 ~ 249.995 MHz: Less than -8 dBμ 250.000 ~ 299.995 MHz: Less than -3 dBμ 300.000 ~ 500.000 MHz: Less than -5 dBμ
	WFM (12 dB SINAD : 1 kHz / 52.5 kHz Dev)	~ 108.000MHz: Less than 0 dBμ
Selectivity	AM / FM	More than 50 dB
	WFM	More than 35 dB
Tuning steps	5/6.25/8.33/10/12.5/15/20/25/30/50/100/125/200 kHz * 8.33 kHz, or 25.0 kHz only on 108.000 ~ 136.991 MHz.	
Battery requirement	3.6 V DC (BP-287)	
External power supply	5.0 V DC ±5 % (USB charging)	
Current drain (at 3.6 V DC)	Rated audio : 380 mA typical Standby : 150 mA typical Power save : 80 mA typical (FM mode, Single display mode, Record function Off, GPS Off, Backlight Off)	
Audio output power (at 3.6 V DC)	Internal Speaker	More than 400 mW (8 Ω, 10% distortion)
	External Speaker	More than 120 mW (8 Ω, 10% distortion)
Operation time	13 hours (Dual display mode, continuous receiving in A band and standby in B band, Auto power save function ON), AF output power : Vol level 20 in internal speaker, GPS ON, Bluetooth OFF)	
Dimensions (W x H x D)	58 x 116 x 33.8 mm, 2.28 x 4.57 x 1.33 in (Projections not included)	
Weight (approx.)	260 g, 9.17 oz (with supplied antenna and batteries) 150 g, 5.29 oz (without supplied accessories)	
Usable temperature range	-20 °C ~ 60 °C, -4 °F ~ 140 °F	

Supplied Accessories

- FA-S270C Antenna
- BP-287 Li-Ion Battery Pack
- MB-127 Belt Clip
- USB Type-C™ cable
- Hand strap

OPTIONAL ACCESSORIES



BP-287
Li-Ion Battery Pack 3.6 V
3280 mAh typ.
3120 mAh min.
(same as supplied)



BP-293
Battery Case
AA (LR6) batteries x 3



BC-223
Rapid Charger
Charges BP-287 in 4 hours (approx.)
AC adapter BC-123S/E is supplied with the charger.



BC-258
AC Adapter
(USB Type-A, 5 V/2 A)



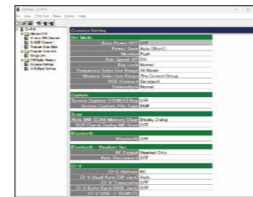
MB-127
Belt Clip
(same as supplied)



SP-40
Earphone



LC-203
Carrying Case
Charging is possible while the carrying case is attached



CS-R15
Programming software for Windows™ PC

FA-S270C
Antenna
(same as supplied)



Expand Your Listening Horizon
108 ~ 500 MHz Wideband Enjoyment



- Bluetooth
- Dualwatch
- IPX7
- VHF/UHF AIRBAND
- USB Type-C™
- MicroSD

Icom and the Icom logo are registered trademarks of Icom Incorporated (Japan) in Japan, the United States, the United Kingdom, Germany, France, Spain, Russia, Australia, New Zealand and/ or other countries. The Bluetooth® word mark and logos are registered trademark owned by Bluetooth SIG, Inc., and any use of such marks by Icom Inc. is under license. USB Type-C is a trademark of USB Implementers Forum, Inc. All other trademarks are the properties of their respective holders. Bluetooth connection has not been tested for all Bluetooth® compatible devices with this product. This does not guarantee that all devices will work with this product. Memory channel indications shown in this product catalogue may not be the same as actual preprogrammed contents. They are shown for the explanatory purpose only.

Icom Inc. 1-1-32, Kamiminami, Hirano-Ku, Osaka 547-0003, Japan Phone: +81 (06) 6793 5302 Fax: +81 (06) 6793 0013

www.icomjapan.com

Icom America Inc.
www.icomamerica.com

Icom (Europe) GmbH
www.icomeurope.com

Icom (Australia) Pty. Ltd.
www.icom.net.au

Your local distributor/dealer:

Icom Canada
www.icomcanada.com

Icom Spain S.L.
www.icomspain.com

Icom Asia Co., Ltd.
www.icomasia.com

Icom Brazil
E-mail: sales@icombrasil.com

Icom (UK) Ltd.
www.icomuk.co.uk

Icom France s.a.s.
www.icom-france.com

Simple Operation for Beginners

Satisfying Features for Enthusiasts



Dualwatch

Receiving Various Signals with Dualwatch

Enjoyable versatile signals, Airband, Railway, Marine, Amateur, Radio broadcasting (FM / WFM) with AM / FM/ WFM mode in between 76 ~ 500 MHz. The Dualwatch function* supports receiving various signals. While receiving on A Band, it is possible to scan B Band, so you never miss a chance to capture signals. For example, it is possible to challenge more advanced aviation radio reception, such as the movements of two airplanes at the same time, by establishing speedy and efficient listening.

* Simultaneously receive VHF/VHF, UHF/UHF, and VHF/UHF bands combinations.

Example : Dualwatch Operation

Receive a signal from control tower in **A band**



Audio of air traffic controller in **A band**



Speaker (or earphone)

Receive a company radio in **B band**



Audio of company radio in **B band**

Color Display

Simple Graphical Icon Menu and Clear Visibility

The IC-R15's large Color LCD has excellent visibility and displays a lot of information. Easy to understand display of received information, broadcasting station, airport names and so on. Introducing a graphical icon menu that enables you to check various items briefly, and smooth setting and intuitive operation are possible.



Display example



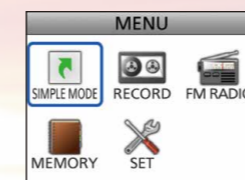
Icon selection menu

Simple Operation

Simple Mode

Frequencies are registered by category in simple mode, and you can receive signals by simply selecting the frequency that you want to listen to. To use simple mode, it is necessary to program frequencies, station names, categorization, etc. in advance.

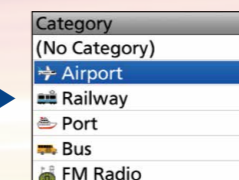
How to receive Airband in Simple mode



STEP1
Select simple mode from Menu



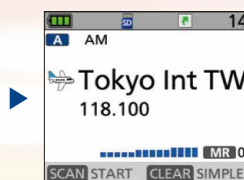
STEP2
Select by category from Menu



STEP3
Select Airband from Menu



STEP4
Select Country from Menu



STEP5
Select a station with the rotary knob

Received Audio Saving on a MicroSD Card

A built-in recording function enables simultaneous recording of two signals, and saves the received audio on a microSD card as a WAV file. Even if you miss the audio, the recorded audio can be played back on the IC-R15 or your PC. Information such as frequency, mode, S-meter, and time (user setting) can also be recorded with the audio and so you can find out later when the audio was recorded.



Reliable To Use in Rainy or Humid Environments

The IC-R15 features superior IPX7* waterproofing and pro-grade construction. It is possible to use it in outdoor situations, airports, railway stations, and even in wet environments.

*Submersible in 1 m depth of water for 30 minutes.



Built-in Bluetooth® Function

Built-in Bluetooth® function frees you from bothersome cabling of headsets and earphones. Improved usability and flexibility, you can concentrate on operations.



High Speed Scan of 150 Channels per second

More variations in Scan function. Built-in High Speed Scan (150 channels per second) supports quickly capturing signals.

Scan Functions

- Full Scan · Band Scan · Program Scan · Auto Memory Write Scan
- Memory Scan · Skip Scan · Tone Scan · Link Scan
- Group Scan · Group Link Scan · Favorite Channel Scan

Chargeable with a USB Type-C™ Cable

The USB Type-C™ terminal on the side of the IC-R15, enables you to charge from an external battery when the internal battery is exhausted. You can use the IC-R15 confidently in any situation, for hobby use such as Airband receiving, where it is difficult to find power source, etc.



Operation Time

Approximately 13 hours* of operation is possible with the BP-287 lithium-ion battery pack that is supplied with the IC-R15.

* AF10% distortion with external speaker (8 Ω load)

Receiving Only Audio Signal

The VSC (Voice Squelch Control) function supports automatically skipping undesired signals in FM/FM-N modes, for example, control signals, unmodulated signals, and receiving only voice communication in scanning. You can use the VSC together with various signaling functions.

Other Features

- USB / SD storage · Power Save function · Auto power off function
- Battery level display function · Key lock function
- Monitor function (Cancelling squelch)
- CTCSS, DTCS with reverse tone squelch function
- Frequency shift function · Auto squelch function
- Selectable tuning steps (13 Types) · Squelch monitor function
- RF attenuator · ANL function · Temporary skip function

COMMUNICATIONS RECEIVER
IC-R15