



AVL FOR UHF / VHF RADIOS

# QUICK SILVER GPS

*Accessory for Icom's F5061 series mobile*



## THE GPS ENGINE IS INSIDE THE PLUG

*No need to disassemble the radio in order to adopt an AVL feature*



**iDAS™**  
ICOM DIGITAL ADVANCED SYSTEM



### **FAST TO ACQUIRE SATELLITES**

*The embedded GPS engine takes less than 32 seconds time to first fix.*

### **FAST TO INSTALL**

*No need to disassemble the radio.  
AVL plug and play.*

### **NO NEED FOR A SECOND CHANNEL**

*Data and voice share one channel,  
with no information loss.*

The Quick Silver GPS has a very sensitive engine. It's built around the SiRF StarIII™ GPS receiver, a very sensitive unit that can pick up GPS signals when many other GPS devices cannot.

Connect Quick Silver GPS to the radio's DB-25 accessory connector, attach the supplied GPS antenna and clone the radio to accept GPS messages at the rear accessory connector. No hardware modifications are needed and the Quick Silver GPS does not require any calibration or programming. Installation can even be done without removing the radio from a vehicle if the rear accessory connector is accessible.

**Icom America Inc.**

**IDAS™ GPS Required Equipment:**

1. Fleet of IDAS F5061D/F6061D mobile radios
2. One Quick Silver GPS plugged in to each mobile radio
3. Third party mapping software

**Base Station Analog GPS Required Equipment:**

1. One F5061 or F6061 EMDC Base Station
2. Fleet of F5061/F6061 EMDC radios
3. One Quick Silver GPS plugged in to each mobile radio
4. Third party mapping software

**General Quick Silver GPS Features:**

The Quick Silver GPS has been designed with a compact and easy to use plug and play form factor providing ease of setup and use:

- State-of-the-art GPS engine
  - SiRFstarIII™ technology
  - 159dBm sensitivity
  - 30 Channels to improve accuracy and coverage
  - Extremely fast start times (<1 sec) and less than 32 seconds time to first fix.
- Connects to the radio's DB-25 accessory connector. No hardware modifications necessary.
- Very low cost AVL solution
- Works with multiple third party mapping vendors



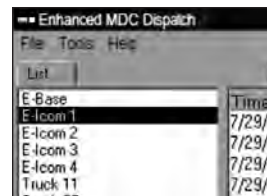
**IC-F5061B EMDC series dispatch transceiver**

Small tabletop footprint, plugs into a standard 115 V AC wall outlet. It's a complex radio made easy, and it sits on a desk. Up to 512 channels.



**IC-F5061 series mobile transceiver**

Includes a LCD screen that can be programmed with names to help give faster ID of channel usage (example: "security", "Bus 12", "Office", etc.). Up to 512 channels.



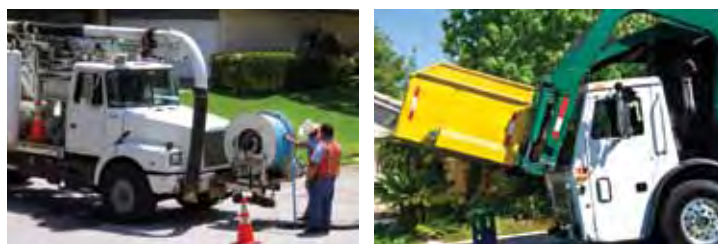
**Icom Ezy dispatch software**

For your office PC running Windows® XP. Comes with your EMDC-equipped Icom radio or upgrade kit. This software is the interface that allows you to communicate between a dispatch radio and subscriber radios. It logs and saves position data for later review, too.



**Third party mapping software**

To view the EMDC subscriber radio's GPS information on your PC monitor, you'll need mapping software. Icom America has several recommended vendors to select from, please visit our website or see the accompanying software handout.



*All information is subject to change without notice or obligation.*

**Icom America Inc.**

For People Who Make Smart Choices

2380 116th Ave NE  
 Bellevue, WA 98004  
 Voice: 425-454-8155  
 Fax: 425-454-1509  
 www.icomamerica.com  
 sales@icomamerica

